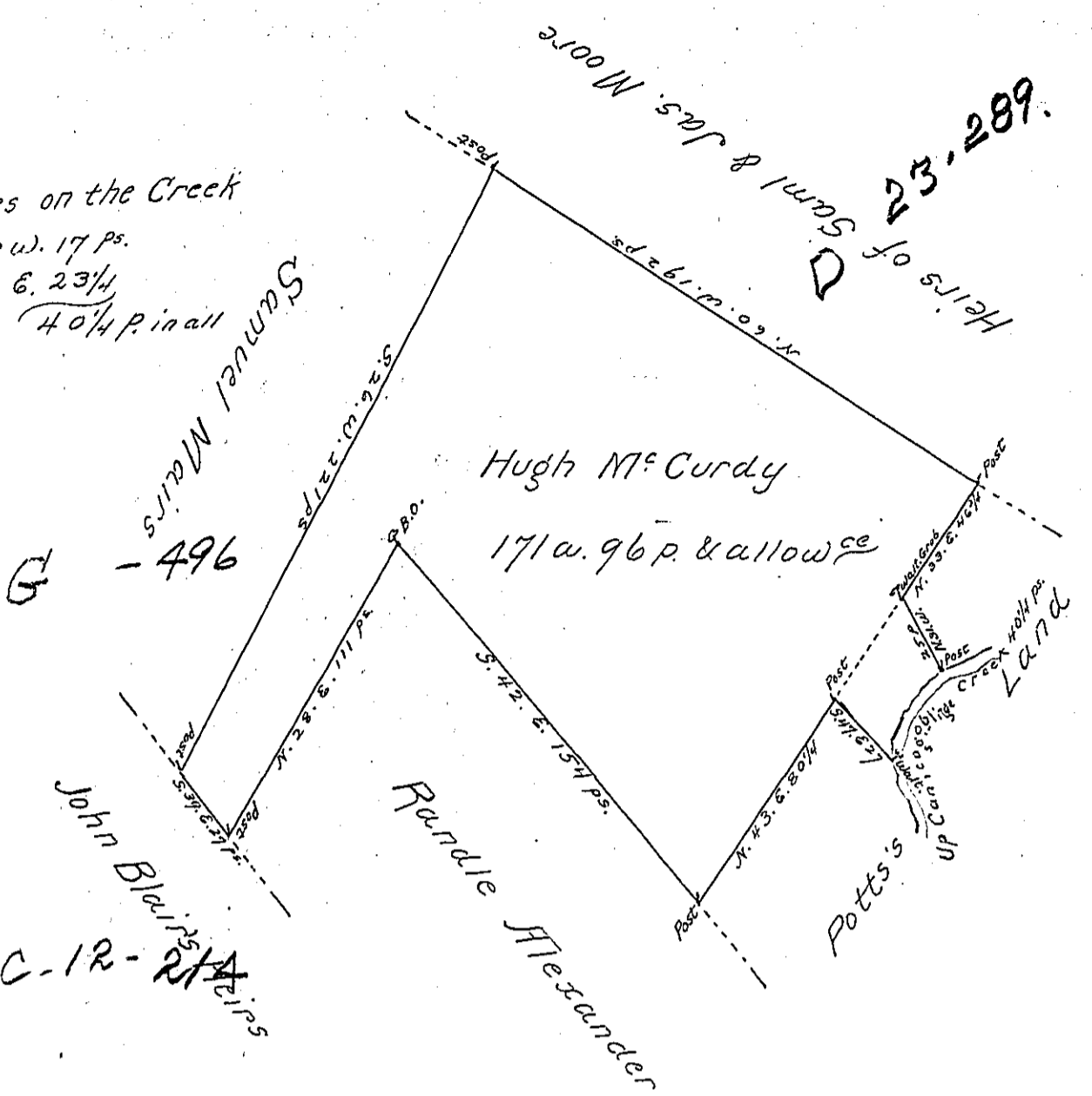


Courses on the Creek  
 1- N. 13° W. 17 Ps.  
 2- N. 53 E. 23 1/4  
 40 1/4 P. in all



A Draft of a Tract of Land situate in Fannet Township in the County of Franklin containing one hundred and seventy one acres and ninety six perches and the allowance of Six p<sup>er</sup>cent for Roads &c. 167 acres & 68 perches which was formerly survey'd to Hugh M<sup>c</sup>Curdy, and may have been returned, the other Part included between the dotted Line and the Creek, containing four acres and 28 perches and allowance survey'd August — 1791 agreeable to the judgment and Report of the Referees appointed by the Honorable the Board of Property in the Case between M<sup>c</sup>Curdy and Potts, and confirmed by the Board by their Order of the first of August 1791. The whole here returned in one Survey in pursuance of the said Order on the Application of Hugh M<sup>c</sup>Curdy No. 2581. dated the 27<sup>th</sup>. Day of January 1767.

A. B. The variation in the Compass now found in the lines of the former Survey is here given, to accommodate it to the additional Survey now made. M. H. D. Matthew Henderson D<sup>s</sup>.

To Daniel Brodhead Esq<sup>r</sup>. Surveyor General.

IN TESTIMONY that the above is a copy of the original remaining on file in the Department of Internal Affairs of Pennsylvania, made conformably to an Act of Assembly approved the 16th day of February, 1833, I have hereunto set my Hand and caused the Seal of said Department to be affixed at Harrisburg, this third day of February 1903

James W. Pitta  
 Secretary of Internal Affairs.